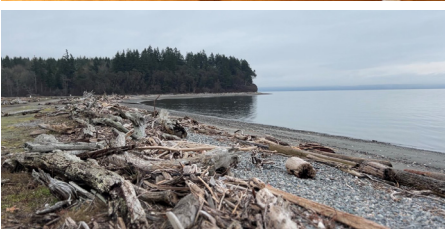
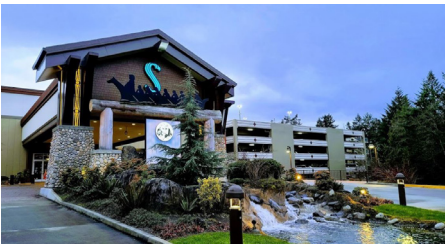


# ECONOMIC IMPACT OF THE SUQUAMISH TRIBE

## 2023 FINDINGS IN BRIEF



**The Suquamish Indian Tribe’s obligations and capacities as an Indian Tribal government have made it an engine of local and regional economic growth.** Over the last few decades, the Suquamish Tribe has made important investments to create that growth—to the benefit of its own members and the citizens of Kitsap County and the State of Washington.

In 2023, the Tribe and its enterprises **paid \$86.5 million directly to 1,240 workers, 78% of whom were not tribal members**, ranking it a **top-5 employer in Kitsap County**. That same year, the Tribe expended more than \$100 million on intermediate inputs for its business and government operations. Its investments in buildings and infrastructure add jobs on top of those operations: it also **spent \$28.5 million on construction and remodeling projects** on and around its Port Madison Reservation.

In 2023, Suquamish’s combined operations and capital investments yielded an estimated **2,213 direct, indirect, and induced jobs in Kitsap County** and **2,478 in all of Washington State**. It also generated estimated **total gross impacts of \$250.4 million in Kitsap County** and **\$296 million statewide**, of which about half in each instance was employee compensation.

**The net income earned by tribal enterprises is not distributed as profits to shareholders worldwide—instead, the Suquamish Tribal Government invests this income in and around the Port Madison Reservation** by providing tribal government services like education, housing, economic development, infrastructure, and much more, and today the Tribe is fiscally independent to a degree not seen in generations. Due to its government status, the Tribe’s economic activity in Indian Country is generally not taxable by states and localities, **but in 2023, the Tribe’s purchasing and hiring nonetheless produced an estimated \$6.0 million and \$13.4 million in local and state taxes, respectively.**

The Tribe’s exercise of self-government in pursuit of economic self-sufficiency has produced remarkable income growth for its members—at a pace exceeding Washington’s and the United States’. **Suquamish economic activity not only ranks it as a top employer but also makes it a force for net economic vitality beyond its reservation boundaries.** Kitsap County benefits economically and fiscally from the Tribe’s economic strength.

Table 1:  
**Estimated Direct, Indirect, and Induced Economic Impacts of Suquamish Tribal Government**  
2023 dollars in millions

	(a) Kitsap County			(b) All of Washington State		
	jobs	empl. comp.	total value added	jobs	empl. comp.	total value added
Suquamish Clearwater Casino Resort	882	\$45.5	\$103.9	948	\$51.1	\$115.5
Kiana Lodge & White Horse Golf Club	124	\$3.7	\$5.8	128	\$4.1	\$6.5
Construction	136	\$10.1	\$20.2	174	\$13.1	\$26.5
Convenience Stores	169	\$7.1	\$24.8	207	\$9.8	\$29.7
Suquamish Evergreen Corporation	55	\$2.1	\$3.4	62	\$2.7	\$4.6
Tribal Government	613	\$46.9	\$72.1	704	\$54.2	\$89.3
Capital Expenditures	234	\$10.9	\$20.3	256	\$12.7	\$24.1
<b>Total</b>	<b>2,213</b>	<b>\$126.4</b>	<b>\$250.4</b>	<b>2,478</b>	<b>\$147.7</b>	<b>\$296.2</b>